

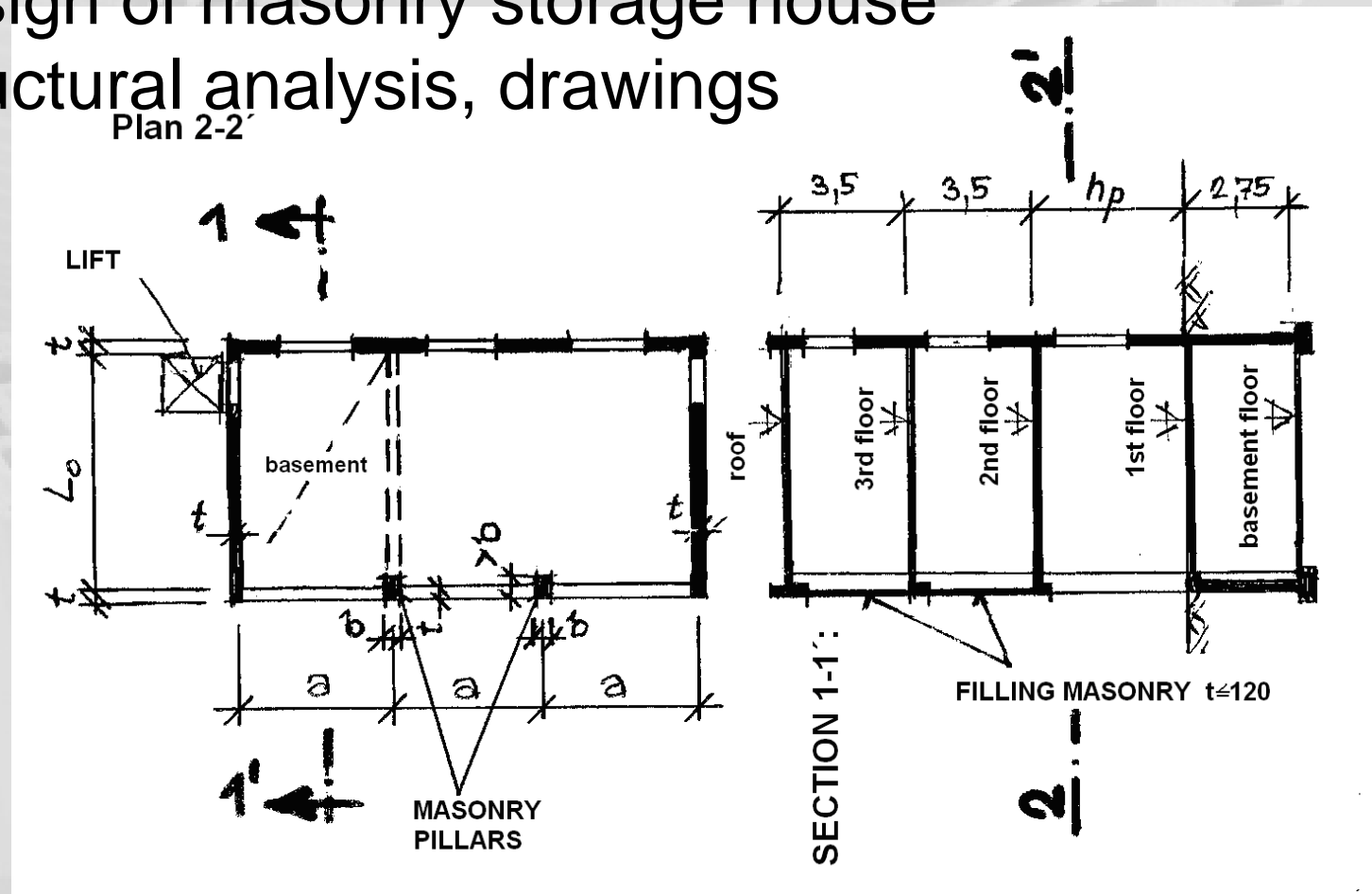


Masonry Structures

4th Seminar

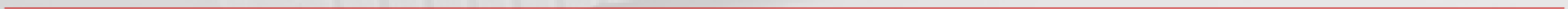
Seminar task

- ❑ Design of masonry storage house
- ❑ Structural analysis, drawings



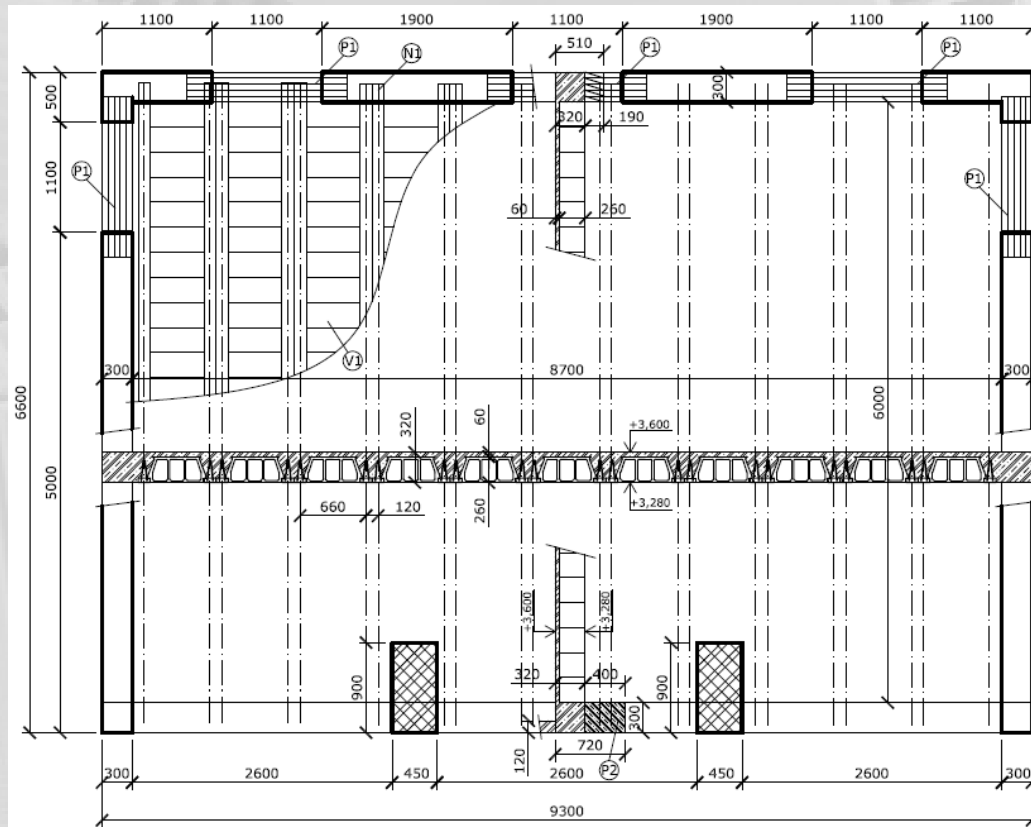
4th homework

- ❑ Assembling drawing (scale 1:50)
- ❑ CAD system or handmade drawing – your choice
- ❑ 2 drawings: typical floor, basement



Assembling drawing

- ❑ Plan of ceiling + vertical supports
- ❑ One section in each direction



Assembling drawing

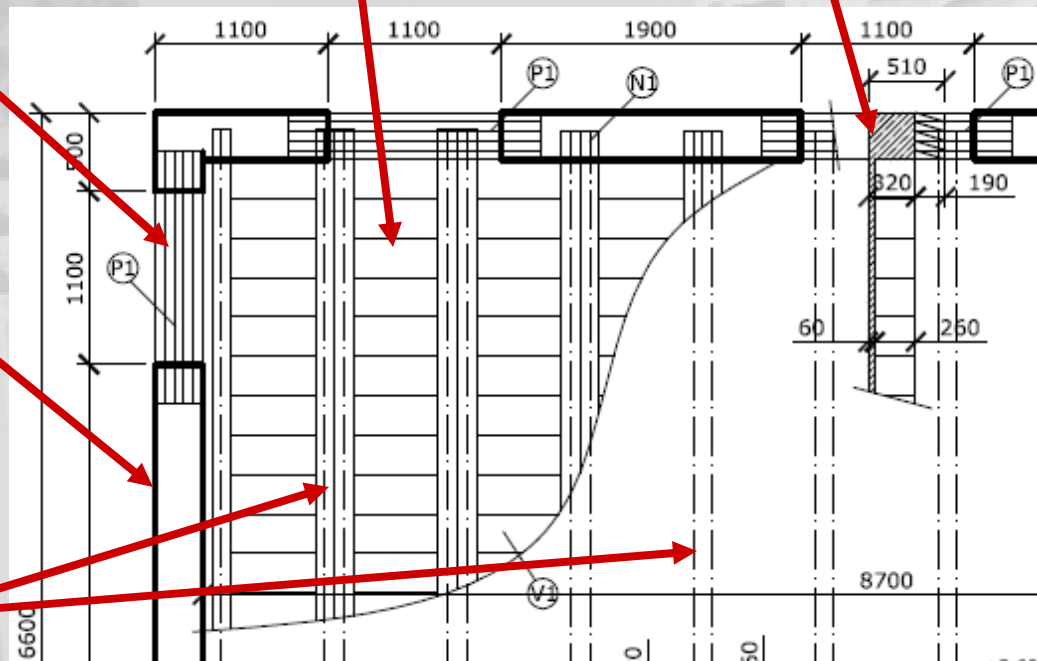
Horizontal structures = narrow solid line

Vertical structures = heavy solid line

Axes of girders = narrow dash-dot line

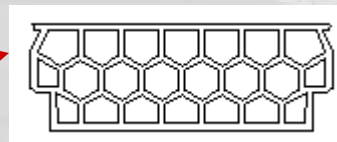
Detailed assembling - only for a part of plan

Sections = narrow solid line

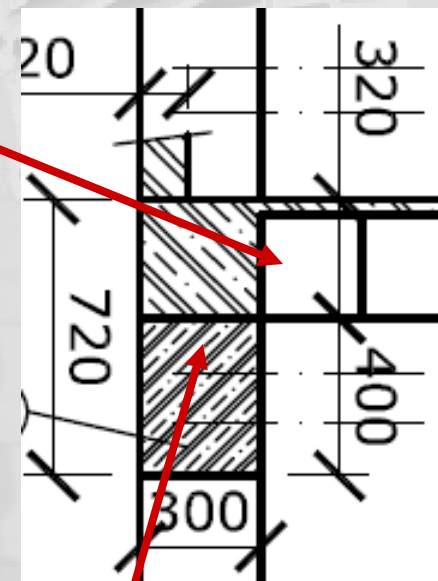
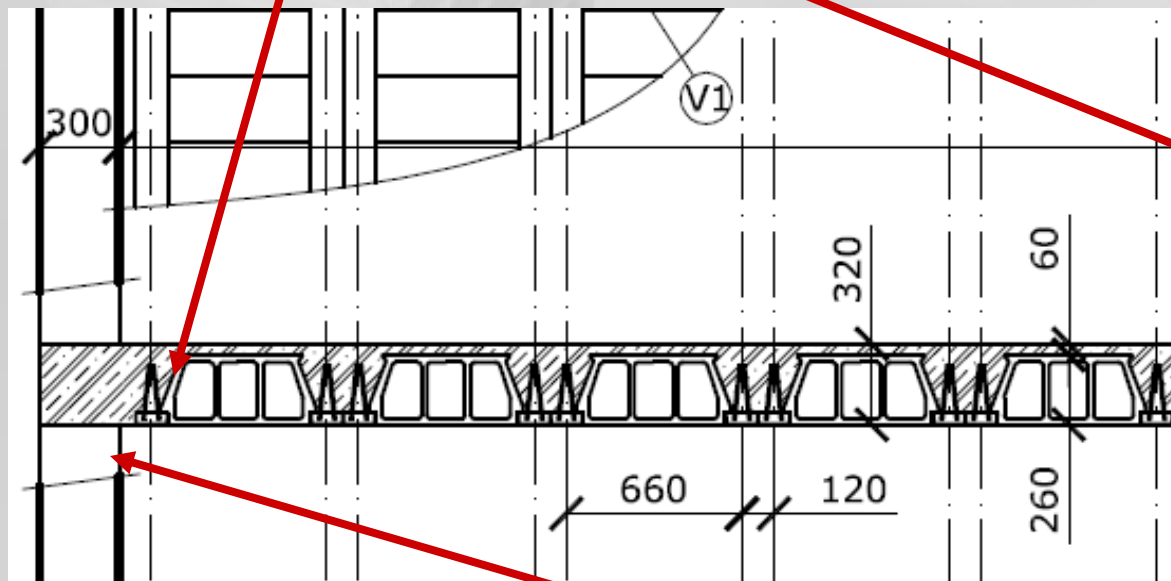
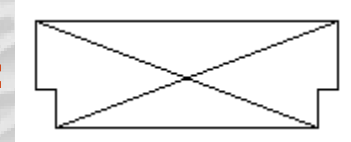


Assembling drawing

Joists, brick inserts in section - schematically



=

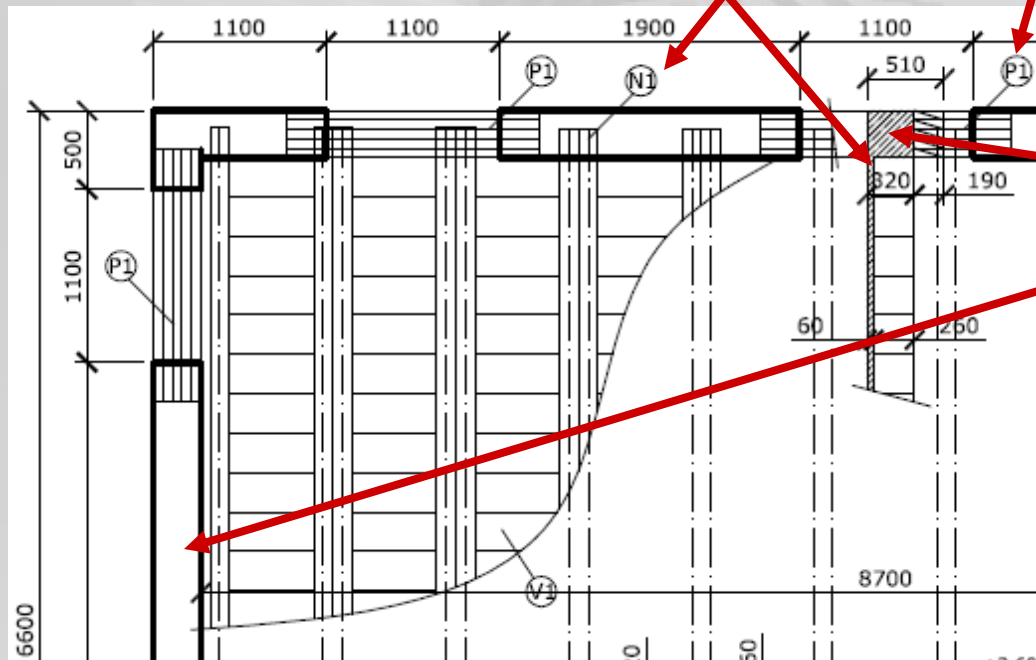


Attachment of walls,
lintels

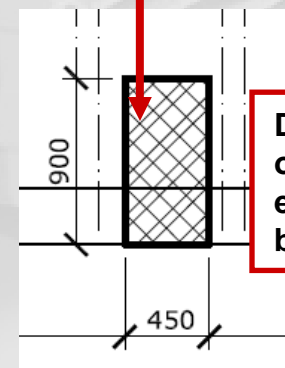
Assembling drawing

Dimensions – openings, walls, depth of the slab, thickness of the wall...

Annotations – lintels, joists, brick inserts

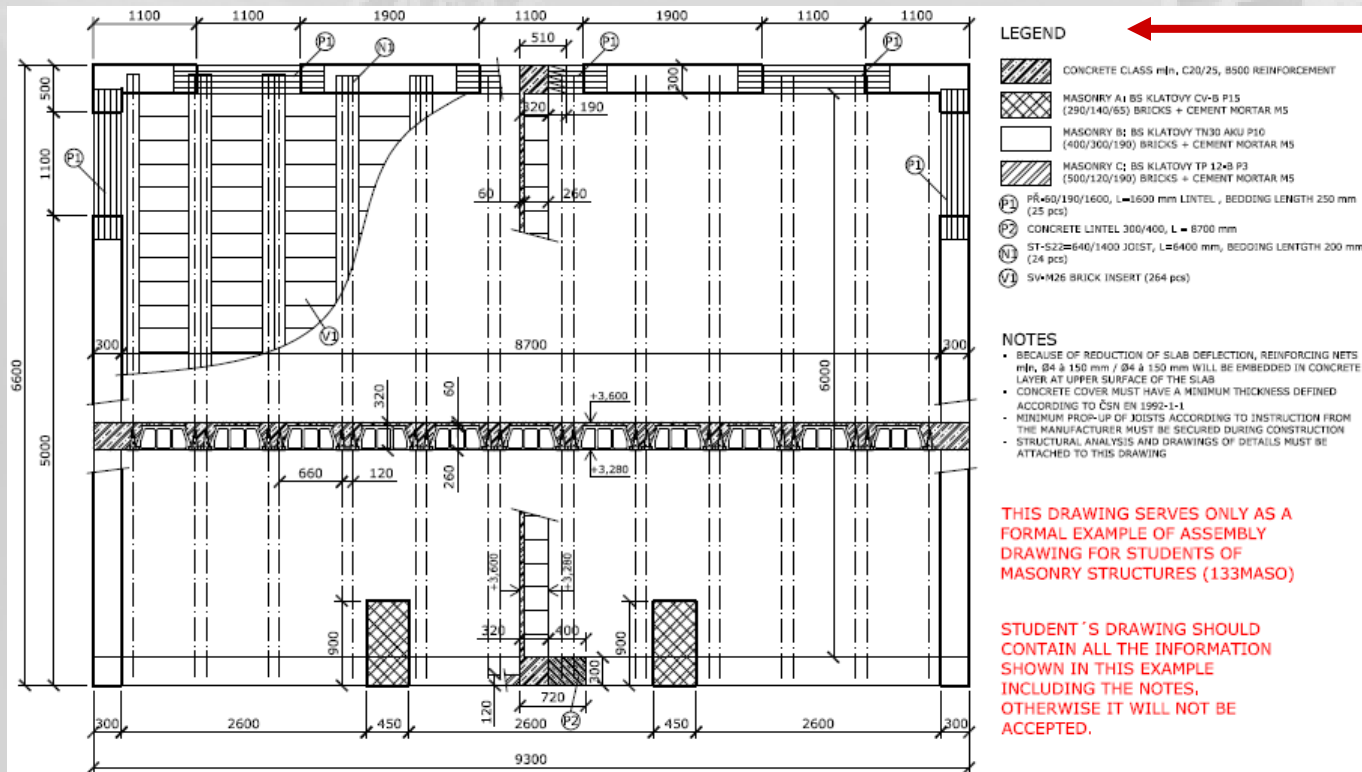


Hatches – types of masonry, concrete



Dimensions of the pillar – estimation: bx600 mm


Assembling drawing



Legend of materials and elements

Masonry = bricks + mortar!!!

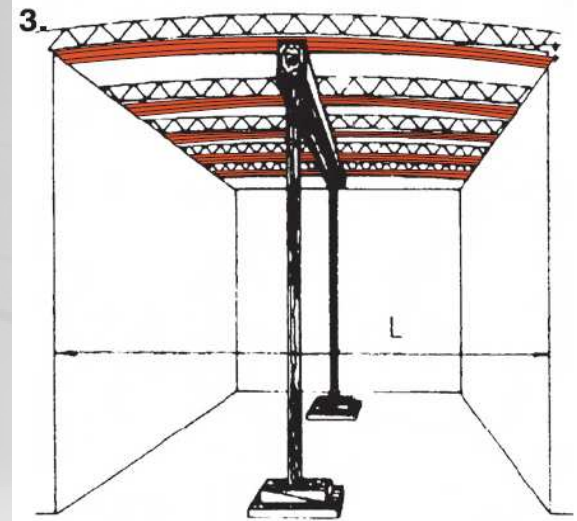
Drawing Title

Prepared by Jana Cimman	Checked by prof. Klokner	Academic year 1910-1911	Fakulta stavební ČVUT 
Course: MASONRY STRUCTURES			
Task: STORAGE HOUSE MASONRY BUILDING			Date: 02/1911
Drawing: ASSEMBLY DRAWING OF 1st FLOOR			Scale: 1:50
			Drawing no. 01

Assembling drawing

NOTES

- BECAUSE OF REDUCTION OF SLAB DEFLECTION, REINFORCING NETS min. $\varnothing 4$ à 150 mm / $\varnothing 4$ à 150 mm WILL BE EMBEDDED IN CONCRETE LAYER AT UPPER SURFACE OF THE SLAB
- CONCRETE COVER MUST HAVE A MINIMUM THICKNESS DEFINED ACCORDING TO ČSN EN 1992-1-1
- MINIMUM PROP-UP OF JOISTS ACCORDING TO INSTRUCTION FROM THE MANUFACTURER MUST BE SECURED DURING CONSTRUCTION
- STRUCTURAL ANALYSIS AND DRAWINGS OF DETAILS MUST BE ATTACHED TO THIS DRAWING



The background of the slide features a collection of white plastic components. In the foreground, there are two large rectangular sheets of plastic mesh with a diamond-shaped grid pattern. Behind them, several sheets of white corrugated plastic are stacked, showing their wavy, ribbed texture. The entire scene is set against a light gray background with soft shadows.

Thank you for your attention

Any questions?