



12th International Conference on
SS14 - Steel, Space & Composite structures 2014
28-30 May 2014, Prague, Czech Republic



department of
steel and
timber
structures

Venue: DAP hotel, Vítězné náměstí 684/4, Praha 6 – Dejvice

ACCOMMODATION BOOKING

Hotel accommodation can be arranged by the FMI CTU in Prague Conference Department on request.

Please make your reservation preferably before 15 April 2014.

- Hotel assignment will be made on the first-come, first-serve basis.
- Hotel voucher will be sent to you by e-mail.

If you are interested in booking hotel via Conference Department of FMI CTU in Prague email your order to terezia.nemcova@fs.cvut.cz.

Required Information:

Surname (Family Name):

First name/s:

Date of arrival:

Approximate time of arrival to Prague:

Date of departure:

Number of nights:

Name of Hotel:

Name of Hotel - second choice:

Type of room (single, double, twin, etc.):

Number of rooms:

Form of payment (by card "on-line", by card "mail order", by bank transfer, on-site payment):

Special requirements or notes (smoker, disabled, etc.):

LIST OF HOTELS

- The price of the accommodation includes bed, breakfast, city charges and VAT.
- The prices below are valid only when the order is sent to the FMI of CTU Conference Department (not to the hotel).

Hotel / Hostel - Category	Single Room	Double or Twin	The way to the Conference Venue	Address
1. DAP *** (our opinion ****)	1100 CZK	1840 CZK	venue	Vítězné náměstí 684/4, Praha 6 – Dejvice
2. Diplomat - superior) ****	100 EUR	115 EUR	417 m on foot	Evropská 15, Praha 6 – Dejvice
3. Masarykova kolej ** (hostel)	840 CZK	1400 CZK	695 m on foot	Thákurova 1, Praha 6 – Dejvice
3. Denisa - classic **** (our opinion 3*)	68 EUR	76 EUR	250 m on foot	Národní obrany 33, Praha 6 – Bubeneč
4. Rokoko ****	130 EUR	135 EUR	metro A	Václavské nám. 38, Praha 1 – Nové Město
5. Ramada Prague City Centre****	135 EUR	140 EUR	metro A	Václavské nám. 41, Praha 1 – Nové Město
6. Art Nouveau Palace – deluxe ****	on request	on request	metro A	Panská 12, Praha 1 – Nové Město
7. Novoměstský hotel ***	1650 CZK	1950 CZK	metro A	Řeznická 4, Praha 1 – Nové Město

1 EUR = cc. 27,35 CZK (March 2014)

Cancellation Fees and Refunds

- The Conference Secretariat must be notified in writing about any change in booking or cancellation
- In case of cancellation hotel booking 4 working days before arrival, one night deposit will be charged.

DAP *** *Dům armády Praha (House of the Army, Prague), Vítězné nám. 684/4, Praha 6 – Dejvice*
GPS: 50°5'58.558"N, 14°23'41.939"E

Location: ca. 25 min from the airport – 20 min by bus + 5 min on foot (300 m), 10 min to the Prague centre

Conference Venue

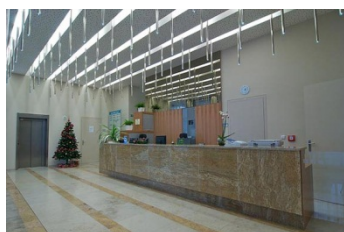
Hotel is situated just a few minutes from the Prague Castle. It is located in the centre of one of the most important Prague's Dejvice district. Hotel is lately reconstructed, up-to-date and comfortable, offers 50 non-smoking rooms. Buffet-style breakfast.

ROOM FACILITIES

TV/SAT, direct dial phone, safe, air-condition, WiFi, toilet, bathroom with shower or tub, hair dryer

PROPERTY FACILITIES

24-hours service reception, hotel safe, currency exchange, city tours/excursions, elevator, credit cards accepted, parking in front of the hotel, pets allowed (extra charge), restaurant Evropa – air condition, breakfast restaurant – 2nd floor, sauna, fitness, congress hall



Diplomat **** *Evropská 15, 160 41 Praha 6 – Dejvice*
GPS: 50°5'59.497"N, 14°23'23.303"E

Location: 20 minutes from the airport (by public transport), 10 minutes to the Prague centre by metro

Way to the Conference venue: ca. 6 minutes on foot (ca. 417 m)

The hotel, renowned for its excellent conference and business facilities, was opened in 1990 and newly renovated in 2007. The hotel is surrounded mainly by diplomatic residences. There are 398 standard or superior rooms and suites. Buffet-style breakfast.

ROOM FACILITIES

air condition, TV/SAT, pay TV, direct dial phone, internet access, safe, mini bar, bathroom, toilet, hair dryer

PROPERTY FACILITIES

PC/internet and Wi-Fi, 24-hours service reception, concierge, fax and secretarial service, post service, restaurant, lobby-bar, non-smoking rooms available, handicapped accessible, fitness centre, sauna, whirlpool, massages, steam bath, flower shop, hairdresser, manicure, souvenir shop, limousine services, conference rooms, hotel garage (extra charge)



Masarykova kolej **, (Masaryk college - hostel), Thákurova 1, Praha 6 – Dejvice
GPS: 50°6'3.686"N, 14°23'13.383"E

Location: 25 min from the airport – 20 min by bus + 5 min on foot, 15 min to the Prague centre
The hostel is situated in a residential area within the Prague 6 district and in the campus of CTU

Way to the Conference venue: ca. 10 min on foot (ca. 695 m)

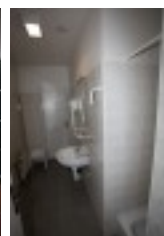
Masarykova kolej is CTU in Prague student's college, from parts used like hotel. The total capacity is 718 beds from single to triple rooms, 4 suites (hotel part has 64 beds). Buffet-style breakfast.

ROOM FACILITIES

TV/SAT, bathroom with shower, toilet, direct dial phone, some rooms has a small kitchen, internet access (free of charge)

PROPERTY FACILITIES

Wi-Fi in the lobby (free of charge), restaurant, pub, elevator, handicapped accessible, currency exchange, credit cards accepted, electronically guarded parking lot (extra charge)



Denisa ** (our opinion – 3 stars)**, Národní obrany 33, Praha 6 – Bubeneč
GPS: 50°6'4.178"N, 14°23'51.584"E

Location: 30 min from the airport – 20 min by bus + 10 min on foot (715 m)
15 minutes to the Prague centre

Way to the Conference venue: ca. 5 min on foot (250 m)

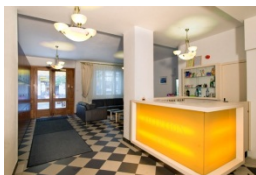
The hotel was renovated in 2008 and offers 43 rooms all comfortably equipped with modern furniture. Non smoking rooms are available. Buffet-style breakfast.

ROOM FACILITIES

TV/SAT, direct dial phone, fridge, Wi-Fi (free of charge), room safe (free of charge), coffee/tea making facilities, toilet, bathroom with shower or tub, toiletries, sewing kit, hair dryer

PROPERTY FACILITIES

24-hours service reception, PC/internet & Wi-Fi in the lobby (free of charge), opening window, currency exchange, city tours/excursions, handicapped accessible, elevator, cleaning service, laundry, clothes-press available, credit cards accepted, parking in front of the hotel (extra charge), pets allowed (free of charge)



Rokoko **** Václavské náměstí 38, Praha 1 – Nové Město
GPS: 50°4'53.695"N, 14°25'35.292"E

Location: directly in the historical and vibrant city centre of Prague, directly at the Wenceslas Square

Way to the Conference venue: ca. 15 min (2 min on foot to the metro station "Můstek (30 m)", then 10 min by metro line A to "Dejvická" station – exit "Vítězné náměstí"

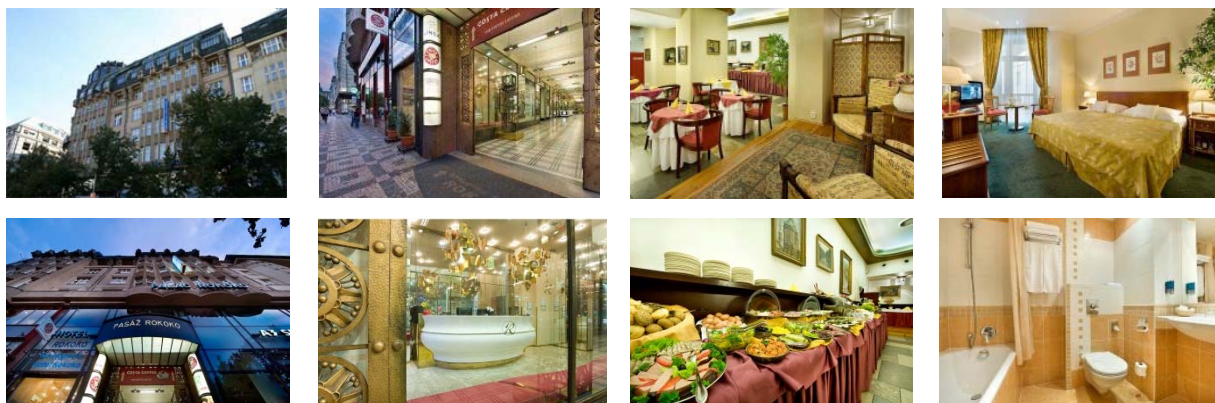
Hotel Rokoko has 48 rooms with a comfortable atmosphere - beautifully designed and decorated in elegant golden tones. There is one room for disable. Buffet breakfast served in an elegant room.

ROOM FACILITIES

internet free WI-FI, TV/SAT, direct dial phone, mini-bar, room safe, under floor heating in bathroom with tub or shower, hair dryer, toilet, ironing board and iron on request, air condition – only some of the rooms

PROPERTY FACILITIES

24-hours service reception & room service, currency exchange, concierge, credit cards accepted, laundry, garage parking nearby for an extra charge, own limousine service – taxi



Ramada Prague City Centre **** Václavské náměstí 41, Praha 1 – Nové Město
GPS: 50°4'53.272"N, 14°25'40.819"E

Location: directly in the historical and vibrant city centre of Prague, directly at the Wenceslas Square

Way to the Conference venue: c. 15 min (5 min on foot to the metro station "Můstek (100 m)", then 10 min by metro line A to "Dejvická" station – exit "Vítězné náměstí"

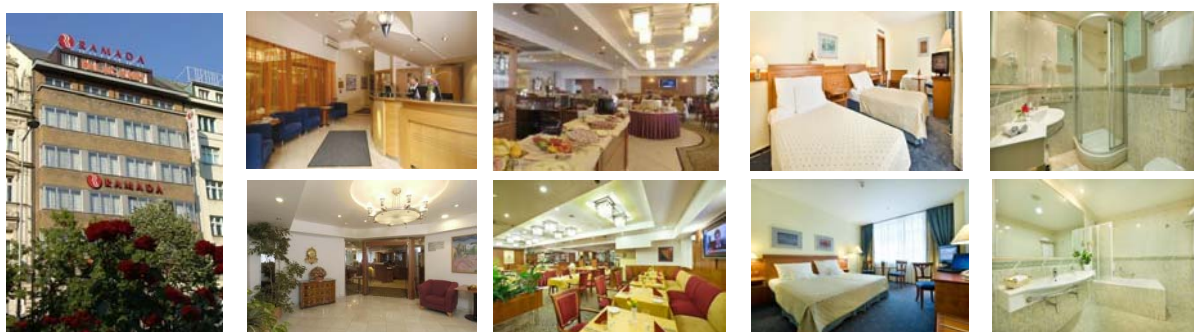
The hotel offers comfortable accommodation in 84 air-conditioned nicely furnished rooms and 14 apartments. There is also one room for disabled guests. Buffet breakfast. Non-smoking rooms are situated on the 2nd, 4th and 6th floor (50% of total hotel capacity). Some rooms offer a magnificent view of Wenceslas Square, other rooms of a closed courtyard. All rooms ensure a tranquil sleep and stay.

ROOM FACILITIES

internet free WI-FI, TV/SAT, direct dial phone, mini-bar, room safe, medical mattress, anti-allergy pillows, black-out curtains, under floor heating in bathroom with tub or shower, hair dryer, toilet, ironing board and iron on request, extra bed on request

PROPERTY FACILITIES

24-hours service reception & room service, currency exchange, concierge, restaurant, bar, business centre, credit cards accepted, laundry, garage parking for an extra charge, own limousine service – taxi



Art Nouveau Palace ***** Panská 12, Praha 1 – Nové Město
GPS: 50°5'2.199"N, 14°25'39.825"E

Location: directly in the historical and vibrant city centre of Prague, just a few steps from Wenceslas Square

Way to the conference venue: ca. 15 min (2 min on foot to the metro station "Můstek (100 m)", then 10 min by metro line A to "Dejvická" station – exit "Vítězné náměstí"

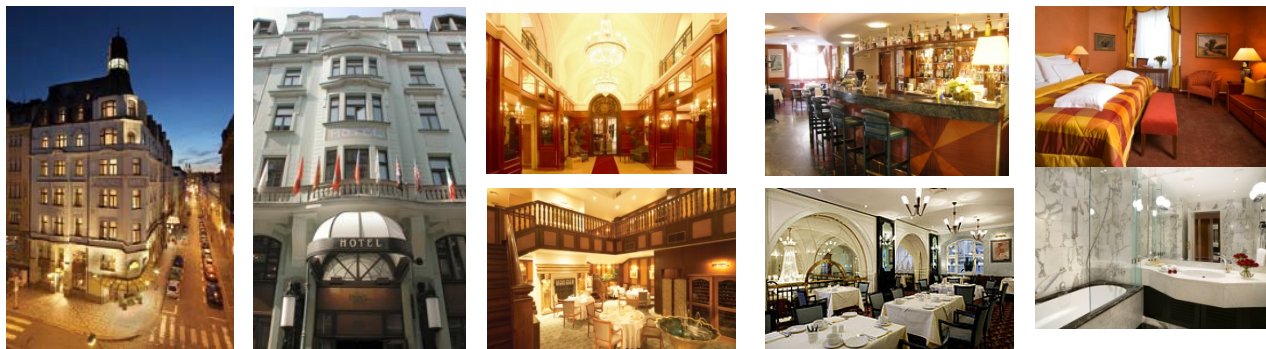
The 5-star hotel is widely renowned for its high service quality and luxurious atmosphere. All 114 rooms and 10 exclusive suites are individually and elegantly appointed.

ROOM FACILITIES

air condition, TV/SAT, pay TV, two direct dial phones, internet access, safe, mini-bar, coffee/tea making facilities, bathroom with tub, toilet, hair dryer

PROPERTY FACILITIES

PC/internet, 24-hours service reception & room service, currency exchange, concierge, city tours/excursions, credit cards accepted, hotel safe, air condition, lobby-bar, restaurant, conference room, elevator, handicapped accessible, dry cleaning service, laundry, hairdresser, fitness facility, sauna (free of charge), hotel garage (extra charge), pets allowed (extra charge)



Novoměstský hotel *** Řeznická 4, Praha 1 – Nové Město
GPS: 50°4'40.995"N, 14°25'20.173"E

Location: quiet street in the downtown area (6 min from Wenceslas Square)

Way to the Conference venue: ca. 15 - 25 min – c. 6 min on foot to the metro station "Můstek (565 m)", then 10 min by metro line A to "Dejvická" station – exit "Vítězné náměstí"

68 beds – double rooms and suites, buffet-style breakfast

ROOM FACILITIES

TV/SAT, direct dial phone, fridge, Wi-Fi (free of charge), toilet, shower

PROPERTY FACILITIES

24-hours service reception, Wi-Fi in the lobby (free of charge), opening window, city tours/excursions, elevator, credit cards accepted, currency exchange