

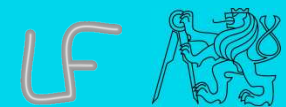
# **XXIIIth International CIPA Symposium**

## **ROLE OF INTERDISCIPLINARY COOPERATION IN PROCESS OF DOCUMENTATION OF CULTURAL HERITAGE**

**Jindřich Hodač, Michael Rykl**

**Faculty of Civil Engineering, CTU in Prague  
Faculty of Architecture , CTU in Prague**

**September 12 – 16, 2011, Prague**



# Content

- cooperation – main characteristic
- research projects
- support projects
- emergency projects
- presentation projects
- conclusion



# Cooperation - generally

background / motivation



# Cooperation - generally

## submitter – contractor relation

- **task definition** .. related to BHR
- **finding of way of record** .. form, content, effectiveness of means ..
- **dialog** – language, crossing borders ..  
step by step through project, clarifying  
before + during + after project  
ability to have a „distance,, .. wider view
- **couse of typical project**
- **types of projects**



# Research projects - RP

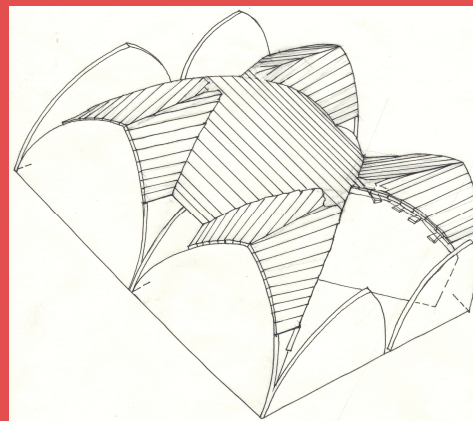
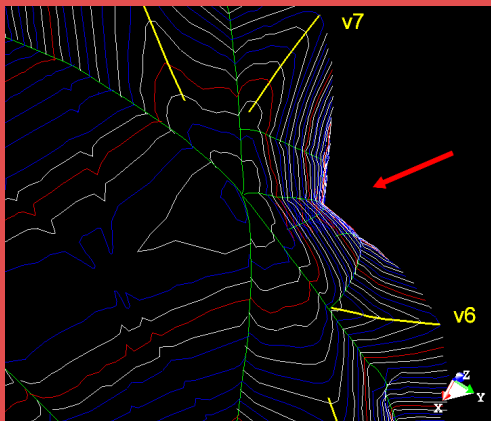
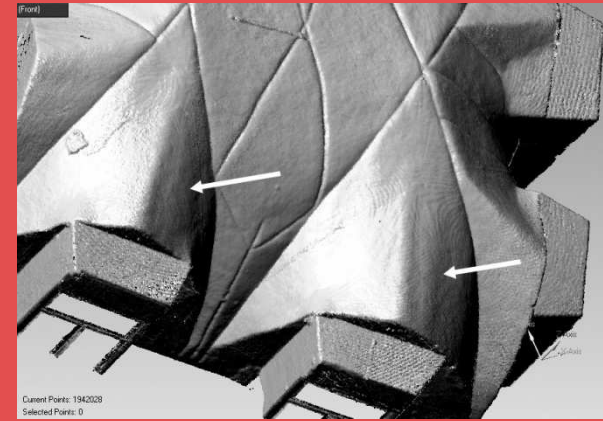
## .. main features

project	goals	verify hypotheses on building development
	technologies	combination, whole range, unconventional approaches
	results	mostly 3D
cooperation	specifics	intensive dialogue between specializations
		changes in course of project .. step by step
	benefits	new findings about development of object
		new findings about technologies
		deeper understanding across specializations



# RP – example

## documentation of **existing vault**



vault of Gothic hall  
fortress  
**construction of vault**  
*laser scanning*  
dialog





# Support projects - SP

## .. main features

project	goals	creation of quality base for BHR
	technologies	combination, simpler methods preferred
	results	mostly 2D
cooperation	specifics	search for appropriate parameters and forms of output
		crossing boundaries between specializations
	benefits	customized high quality documentation traditional result with added information

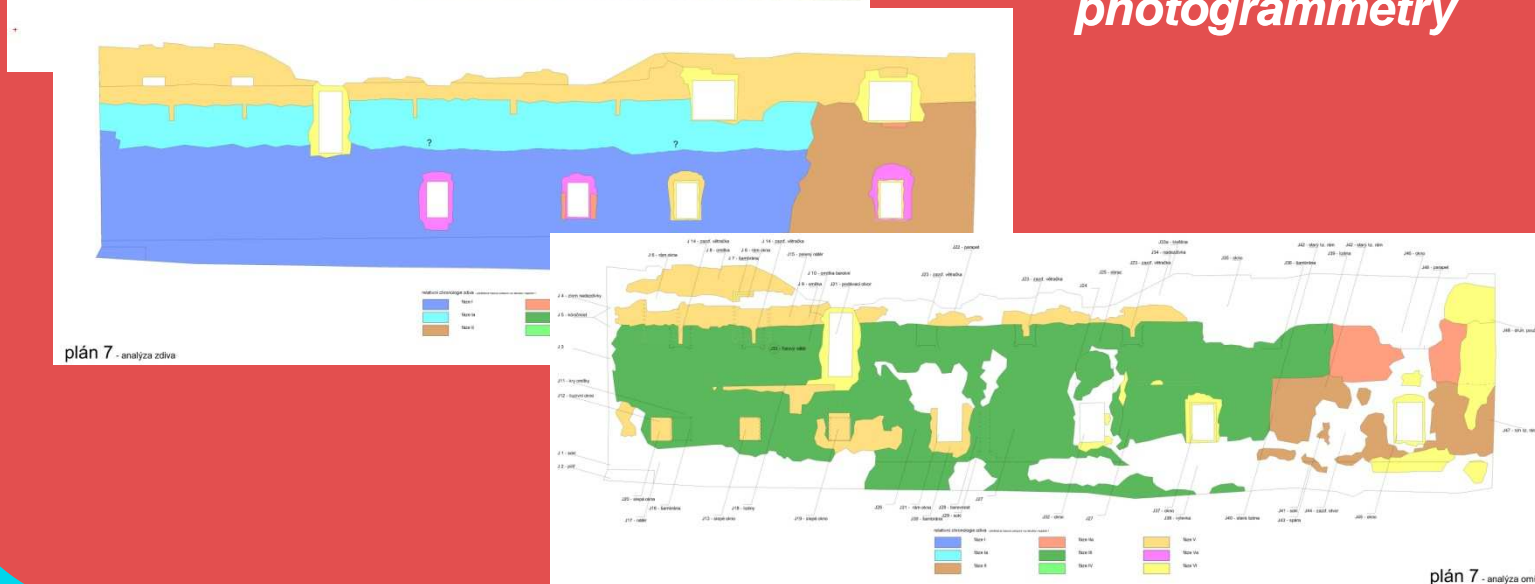


# SP – example

## photomap + its interpretation



facade  
fortress  
masonry + plaster evolution  
surveying + single image  
photogrammetry





# Emergency projects - EP

## .. main features

project	goals	emergency documentation of sites at risk
	technologies	combination, whole range, quick data collection
	results	mostly 3D
cooperation	specifics	clarification of priorities for documentation
		time, safety and technical conditions
	benefits	data recorded for future search for effective technologies of documentation

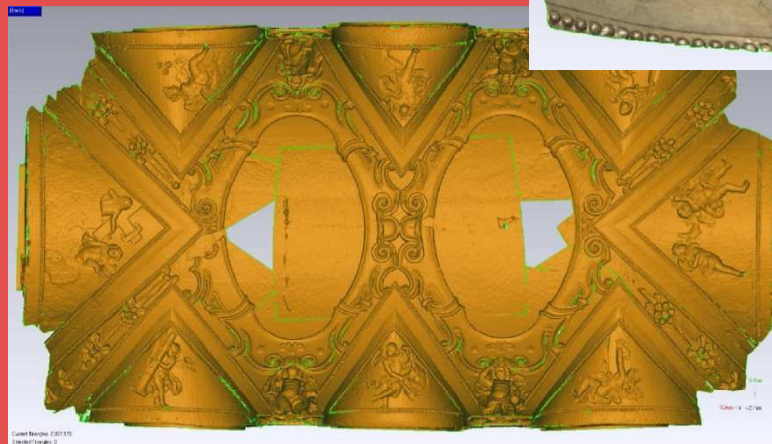


# EP – example

## documentation of **stucco decoration**



Baroque vault  
castle's chapel  
**building at risk**  
*optical correlation  
system*



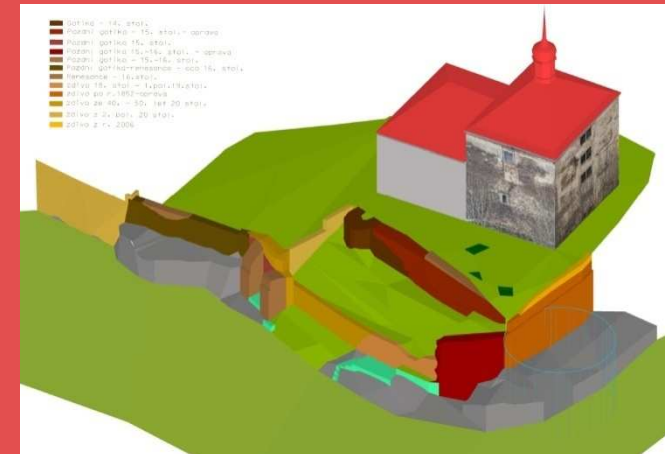
# Presentation projects - PP

## .. main features

project	goals	presentation of collected research outputs
	technologies	combination, use of existing data
	results	mostly 3D, visualization, animation
cooperation	specifics	working with various data sources
		working with results of research - explanation/understanding
	benefits	search for optimal methods of presentation suggestions for improving of research

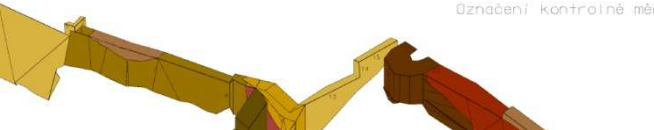


# historical development of rampart



Priloha 6:

Označení kontrolně měřených hradeb

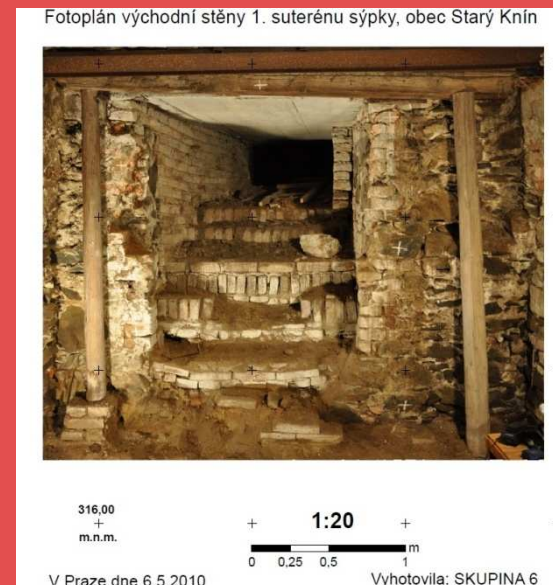


A 3D perspective view of a castle wall model. The wall is composed of several segments, some of which are highlighted in different colors (yellow, orange, red, green) to indicate specific measurement points. The segments are numbered 1 through 14. The wall is shown in a perspective view, with the ground plane visible at the bottom.



# Conclusion

**training** .. learning environment, patterns  
ideal / real course of project  
cooperation cross specializations  
quality of results, satisfaction, enrichment ..





# XXIIIth International CIPA Symposium

**Thank You for Your attention ..**

**contact: [lfgm.fsv.cvut.cz/~hodac](http://lfgm.fsv.cvut.cz/~hodac)**

**[hodac@fsv.cvut.cz](mailto:hodac@fsv.cvut.cz)**

**[rykl@fa.cvut.cz](mailto:rykl@fa.cvut.cz)**

