


 Action TU0904


 www.delta-gc.be

**FIRE ENGINEERING
FOR REHABILITATION
OF THE CINEMA « LE PALACE »**

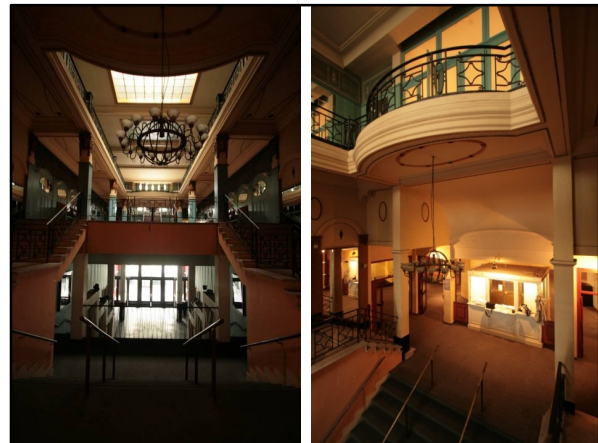
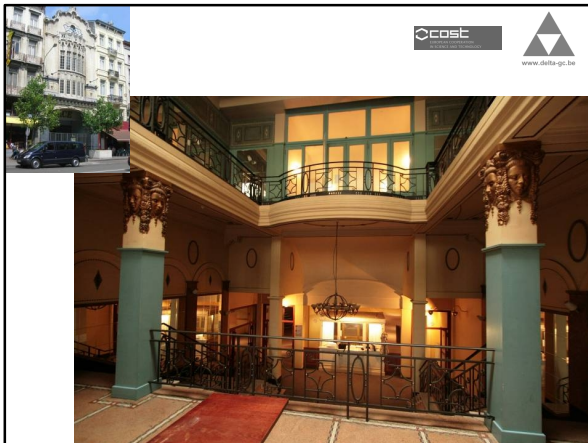




Dr Ir Jean-François CADORIN
Administrateur Délégué (CEO)
s.a. bureau d'études delta g.c.

Building history


- ✓ 1913-1973: Pathé Palace
- ✓ 1999-2001: Kladaradatsch
- 
 ✓ 2002-2004: Théâtre national de Belgique
- ✓ 2007: start of studies for new projet
- ✓ 2012 January: Start of construction works
- ✓ 2013 September: Opening

LE PALACE!

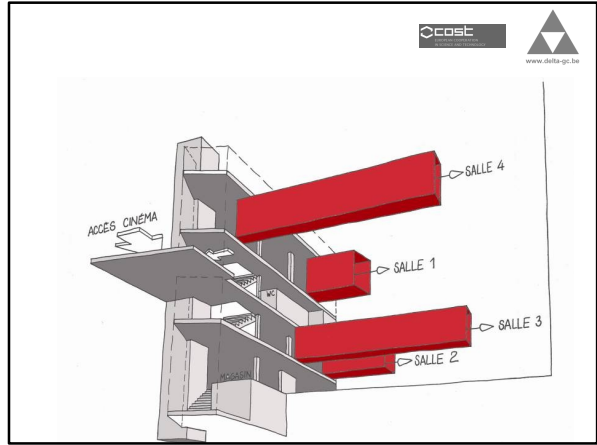
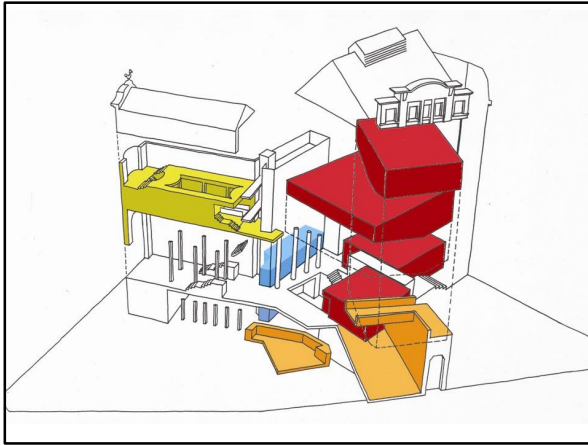




 www.delta-gc.be

Challenges

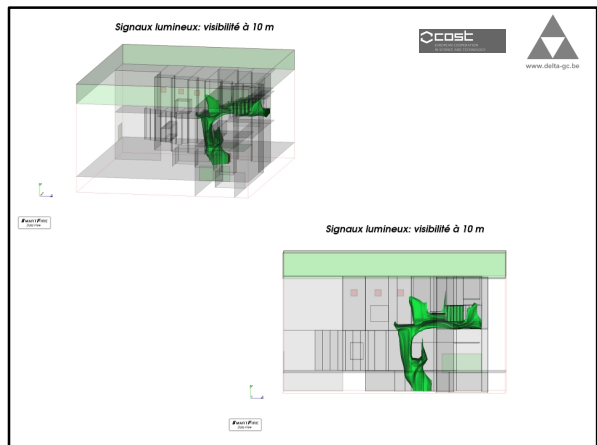
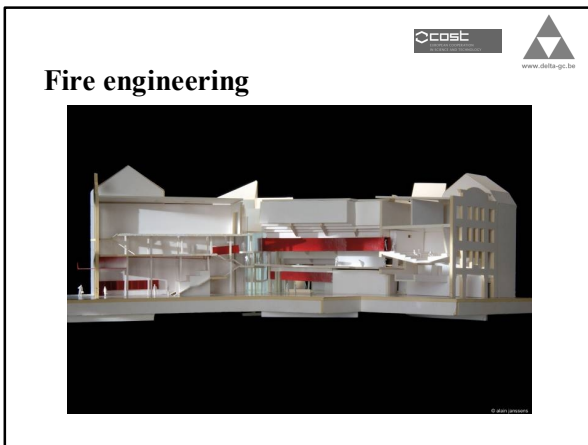
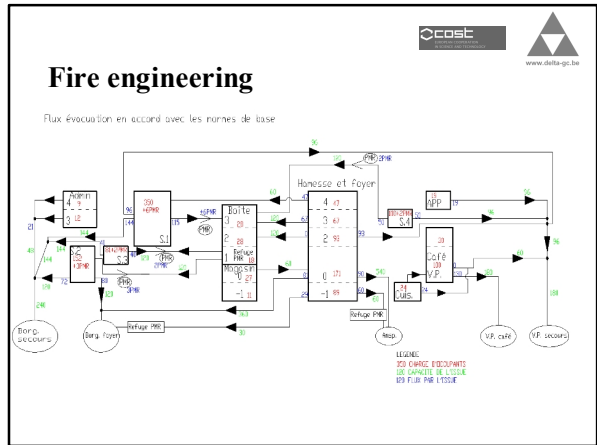
- ✓ Cinema PALACE in the heart of Brussels
- ✓ Historical building :
 - Art deco (arch. Paul HAMESSE)
 - Classified as monument
- ✓ Very complex geometry
- ✓ Complex legislation
- ✓ High occupant load
- ✓ Accessibility for disabled

⇒ Fire safety is one of the major challenges



Fire safety requirements (Brussels, BE)

- ✓ For new buildings : From 1994, « Basic norms », prescriptive rules = LAW
 - Fire brigade has to check whether it is respected
 - Waiver can be asked to Ministry of interior
- ✓ For existing buildings : Basic norms not applicable
 - Fire brigade shall define prescriptive rules for each project individually : basic norms used as reference
 - « Waiver » shall be asked to fire brigade





Thank you