

The logo for StuBeCo, featuring the company name in a teal, sans-serif font. The background of the slide is a dark blue with a pattern of matchsticks forming a structural truss, with some matchheads highlighted in red.

StuBeCo

Studiebureau voor berekening
van constructies

Structural fire engineering in building renovation

Application of Natural Fire and Heat Transfer Model to
guarantee Fire Safety

Ir. Tom Molken

29-04-2011

Design considerations

- Belgian standards for school building IBN/BIN 1982
- Belgian regulations for low buildings R.D. 1997

Existing regulations

- ISO834 + design following NBN-EN's = conservative
- Natural fire + interrogation commission = delay (5 months)

Scientific possibilities

- Existing building constructed from 1881 till 1937 < 1982
- Transformation without building permit request
- Natural fire without interrogation

Approach, with use of software tools

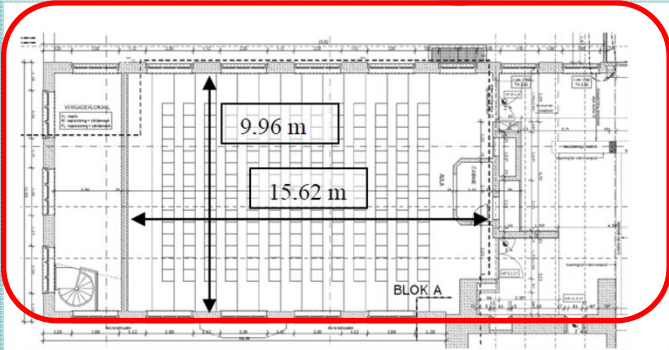
Main reason for advanced study; conscience problem of local school authority, because of leak in regulations for existing buildings



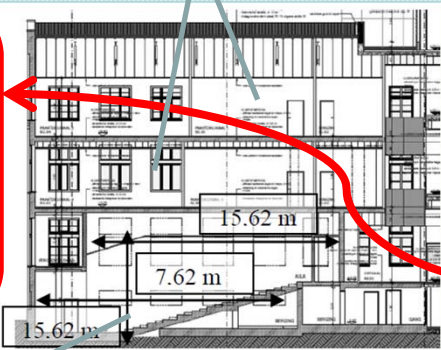
Description of case study

Geometry

1937



Class rooms



1881



photo



2010



Audience

Material properties

Material	ρ [kg/m ³]	$\Delta L/L$ [mm/mK]	λ [W/mK]	c [J/kgK]
Masonry	1600	5	0,70	840
Concrete	2300	10*	1,60*	1000*
Steel	7850	12*	14,6*	450*

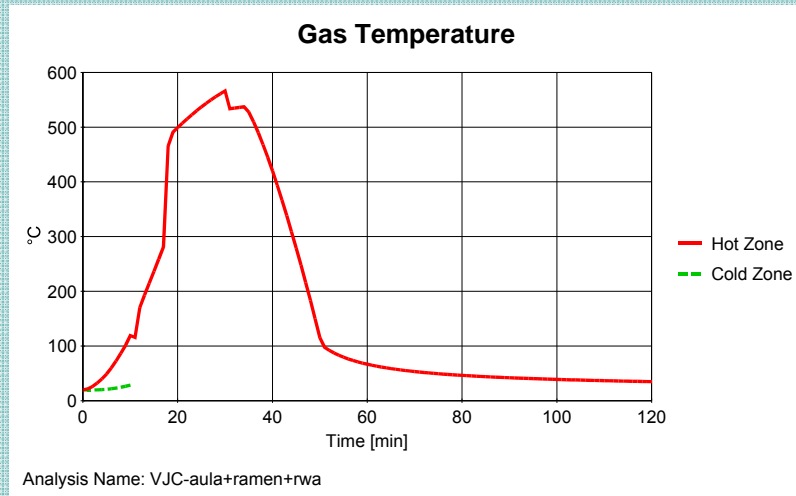
* At 20°C, temperature dependent following EN's



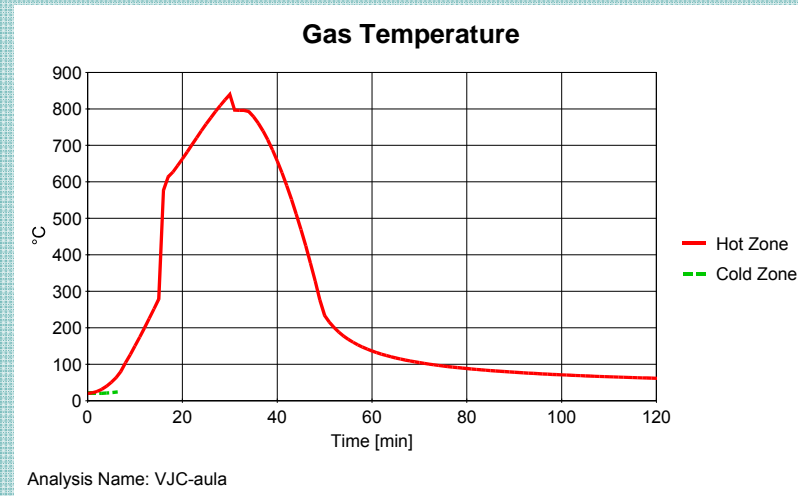
Fire load = 2-zone model

- Fire load due to EN 1991-1-2 = 347 MJ/m² for school building raised till 511 MJ/m² for wooden false ceiling in audience.
- Fire growth = medium, RHR = 250 kW/m², modification factors of 1; 0,87; 0,78 and 1,43 (danger of activation; heat detection; off site fire brigade and surface)
- Combustion efficiency factor = 0,80 and a constant ratio of at least 2% openings in relation to the vertical surfaces

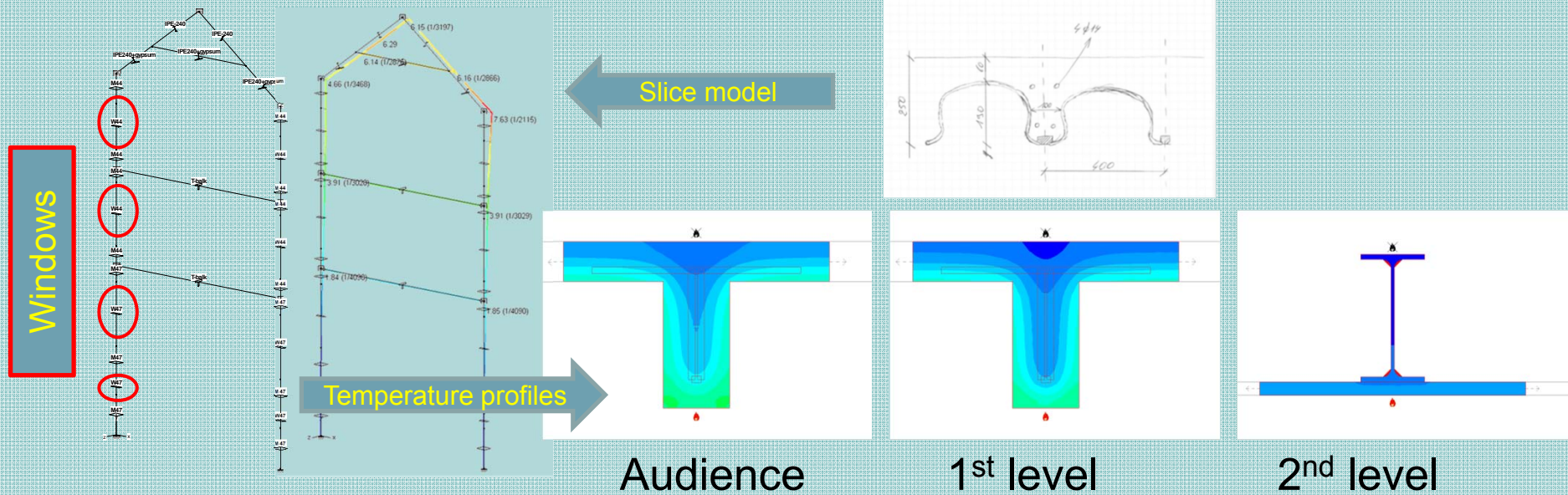
Audience, actual situation



Audience, actual situation



Mechanical response of structure



Conclusions

- With the aid of easy to use 2-zone models possibility to build up a tailor made solution for this particular problem.
- The proposed solution is withhold by the school authority and executed without delay in execution time.

